

# AIRCRAFT ACTIVITY REPORT

ARGUS RELEASES JUNE BUSINESS AIRCRAFT ACTIVITY

IMMEDIATE RELEASE // CINCINNATI, OH // JULY 06, 2018

## JUNE FLIGHT ACTIVITY SLIPS TO PROVIDE THE FIRST DROP IN 2018, POSTING A DECREASE OF 0.1% YEAR OVER YEAR.

The tables below reflect business aircraft activity data for June 1-30, 2018 vs. June 1-30 (y/y), 2017 and June 1-30, 2018 vs. May 1-31, 2018 (m/m) respectively.

### YEAR-OVER-YEAR FLIGHT ACTIVITY

TRAQPak's review of year over year flight activity (June 2018 vs. June 2017) indicates that June 2018 recorded a decrease of 0.1%. The results by operational category were all red with Fractional activity showing the largest yearly decline, down 0.7% year over year. Part 91 activity followed with a drop of 0.1% while Part 135 activity recorded 6 fewer flights than 2017 to remain flat, 0.0%. The aircraft categories were mixed with large jets posting the largest gain from 2017, up 1.5%. Mid-size jets posted an increase of 1.4%, while light jets posted a 0.5% year over year decrease. The turboprop segment posted a decline of 1.9%.

June 2018 vs. June 2017

	Part 91	Part 135	Fractional	ALL
<b>Turbo Prop</b>	0.4%	-5.1%	0.2%	-1.9%
<b>Light Jet</b>	0.3%	0.6%	-6.3%	-0.5%
<b>Mid-Size Jet</b>	-1.7%	1.5%	7.0%	1.4%
<b>Large Jet</b>	0.5%	11.5%	-21.0%	1.5%
<b>All Aircraft</b>	-0.1%	0.0%	-0.7%	-0.1%

### MONTH-OVER-MONTH FLIGHT ACTIVITY

June business aviation flight activity posted an expected month over month decrease to finish down 2.6% from May 2018. Results by operational category were all negative for the month, with the Part 135 segment posting the largest monthly decrease, down 4.0%. Part 91 & Fractional flight activity each posted a decrease of 1.6% & 2.2% for the month. Aircraft categories were all negative as well, with mid-size jets leading the way, down 3.6%. Light & large jets each followed with a decrease of 3.4% for the month while turboprops posted a decrease 0.6%.

June 2018 vs. May 2018

	Part 91	Part 135	Fractional	ALL
<b>Turbo Prop</b>	1.3%	-3.9%	8.7%	-0.6%
<b>Light Jet</b>	-2.4%	-5.0%	-3.5%	-3.4%
<b>Mid-Size Jet</b>	-4.6%	-3.2%	-2.2%	-3.6%
<b>Large Jet</b>	-2.3%	-3.9%	-8.4%	-3.4%
<b>All Aircraft</b>	-1.6%	-4.0%	-2.2%	-2.6%

ARGUS TRAQPak data is aircraft flight number specific arrival and departure information on all IFR flights in the US (including Alaska and Hawaii), the Caribbean and Canada.

Note: for purposes of this report, FAR Part 135 flight data represents all flight activity of aircraft on a Part 135 charter certificate *regardless of individual flight mission* (excluding cargo, scheduled Part 135, and fractional operators).



TRAQPak is the most sophisticated aircraft activity analysis and market intelligence reporting tool that integrates the intelligence of the world's largest business aviation databases, with aircraft movement data and aircraft owner/operator contact information, to help make better, more informed business planning decisions.

ARGUS International, Inc. (ARGUS) is a specialized aviation services company whose mission is to provide the aviation marketplace with data and information necessary to make informed decisions and manage risk. ARGUS provides world-class aviation software and business management solutions, including AVMOSSYS business management software, TRAQPak, CHEQ, and ARMOR SMS.

Founded in 1995, ARGUS is headquartered in Cincinnati, Ohio, and actively engaged around the globe.



### NEXT MONTH'S FORECAST

Looking ahead...TRAQPak analysts estimate there will be a 3.6% increase in overall flight activity year over year in July 2018.

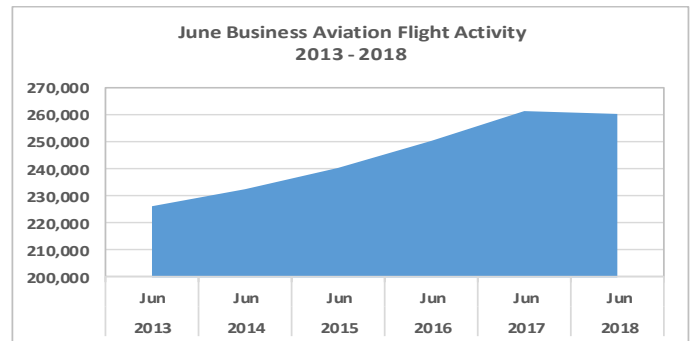


### FLIGHTS BY DAY

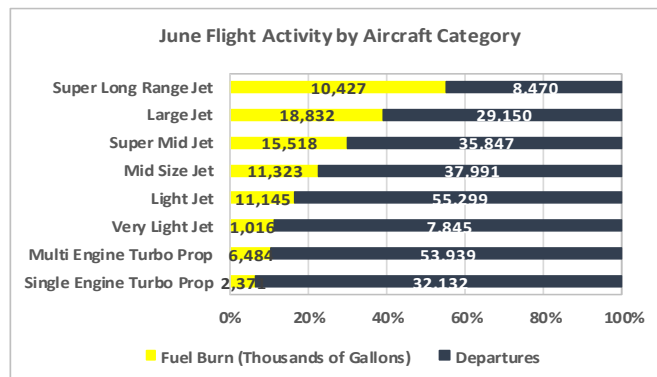
	2017	2018	% Change
Weekday	9,536	9,618	0.9%
Weekend	6,444	6,552	1.7%



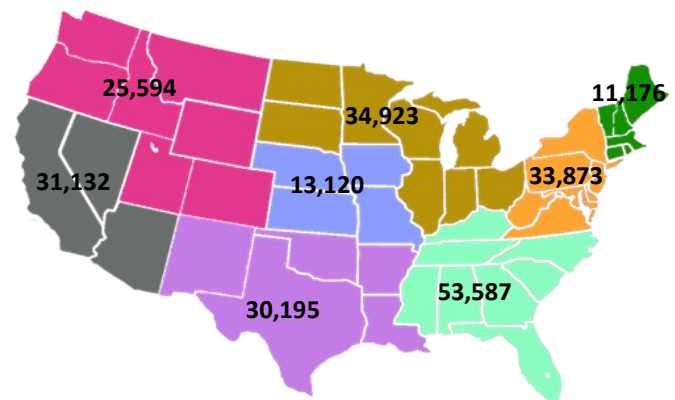
### BUSINESS AVIATION FLIGHT ACTIVITY



### FLIGHT ACTIVITY BY AIRCRAFT



### REGIONAL BREAKDOWN (DEPARTURES)



### TRAQPAK AIRCRAFT CATEGORIES

#### TURBO PROP

Single Engine Turboprop Aircraft and Multi-Engine Turboprop Aircraft

#### SMALL CABIN JET

Very Light Jets (VLJ) and Light Jets (LJ)-Jet aircraft with a maximum takeoff weight of less than 20,000 lbs.

#### MID-SIZE CABIN JET

Mid-size Jets (MJ) and Super Mid-size Jets (SMJ) - Jet aircraft with maximum takeoff weight of over 20,000 to 41,000 lbs.

#### LARGE CABIN JET

Large Jets, Ultra-Long Range and Heavy Jets – Jet aircraft with maximum takeoff weight of over 41,000 lbs. For weight over 41,000 lbs and Ultra-Long Range and Heavy Jets having an NBAA IFR Range above 6,000NM.

#### MEDIA CONTACT

Presley Benzing, Director of Marketing // ARGUS International // +1 513.852.1021 // [presleybenzinger@argus.aero](mailto:presleybenzinger@argus.aero)

#### NOTICE OF DISCLAIMER

Readers are advised that this report is issued solely for informational purposes. ARGUS also makes no promise and/or warranty to maintain and/or update the published information. Suspension of this service may occur at any time at the discretion of the Institution. ARGUS shall not be liable for any errors or inaccuracies, regardless of cause, or the lack of timeliness of, or any delay or interruptions in, the transmission thereof to the users.